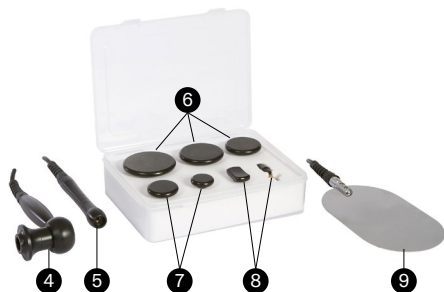


- Fuse x 2 units
- Instruction manual x 1 unit

TECHNICAL SPECIFICATIONS

Product	Monopolar Radiofrequency
Reference	0009371
Voltage	AC 200-240 V~
Input frequency	50 Hz
Power	150 W
Output Frequency	500 kHz
Achievable working depth	2 cm
Dimensions	44 x 31 x 35 cm

COMPONENTS

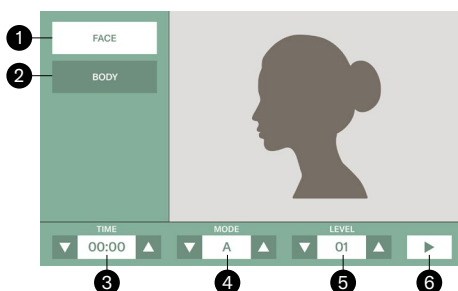


- 1 Main body
- 2 Threaded tip bar
- 3 Methacrylate plate for accessory holder
- 4 Body handpiece
- 5 Face (and eye area) handpiece
- 6 Body heads
- 7 Face heads
- 8 Eye area heads
- 9 Negative electrode plate

CONTROL PANEL

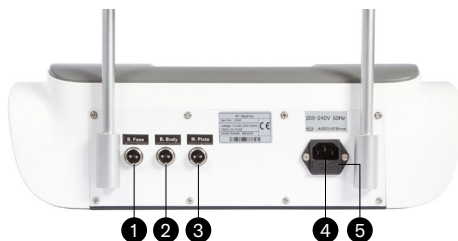


- 1 On / Off button
- 2 Display screen and parameter control



- 1 Selection of function to use: face
- 2 Selection of function to use: body
- 3 Time display and adjustment
- 4 Mode display and adjustment
- 5 Display and setting of work intensity
- 6 Start or Pause the operation of the machine

REAR PANEL



- 1 Face handpiece connector
- 2 Body handpiece connector
- 3 Negative electrode plate connector
- 4 Electrical power supply connector
- 5 Fuse